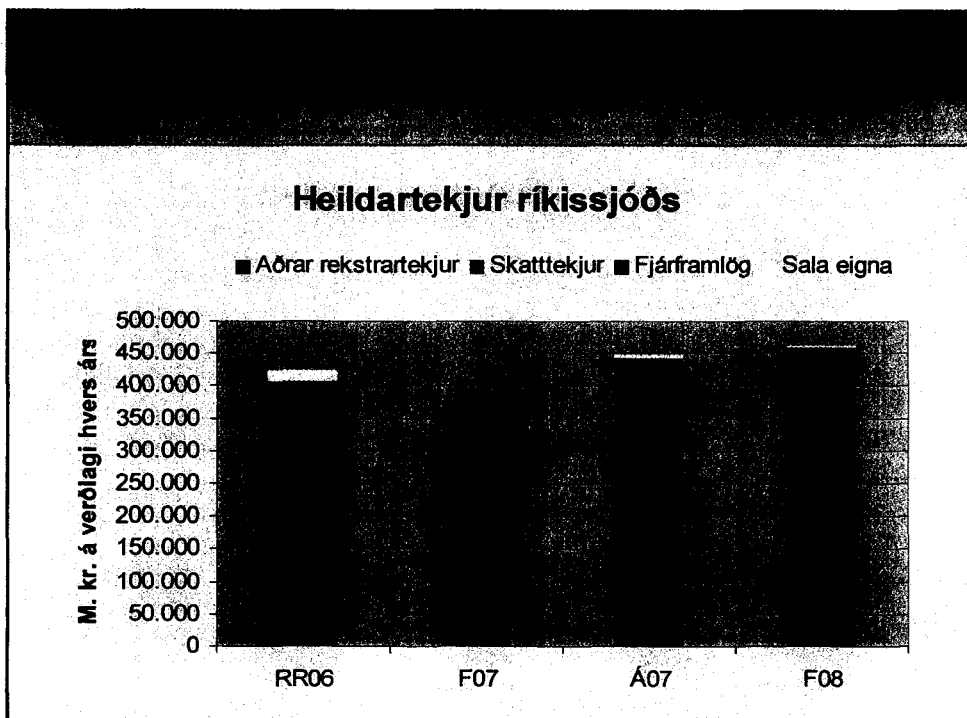


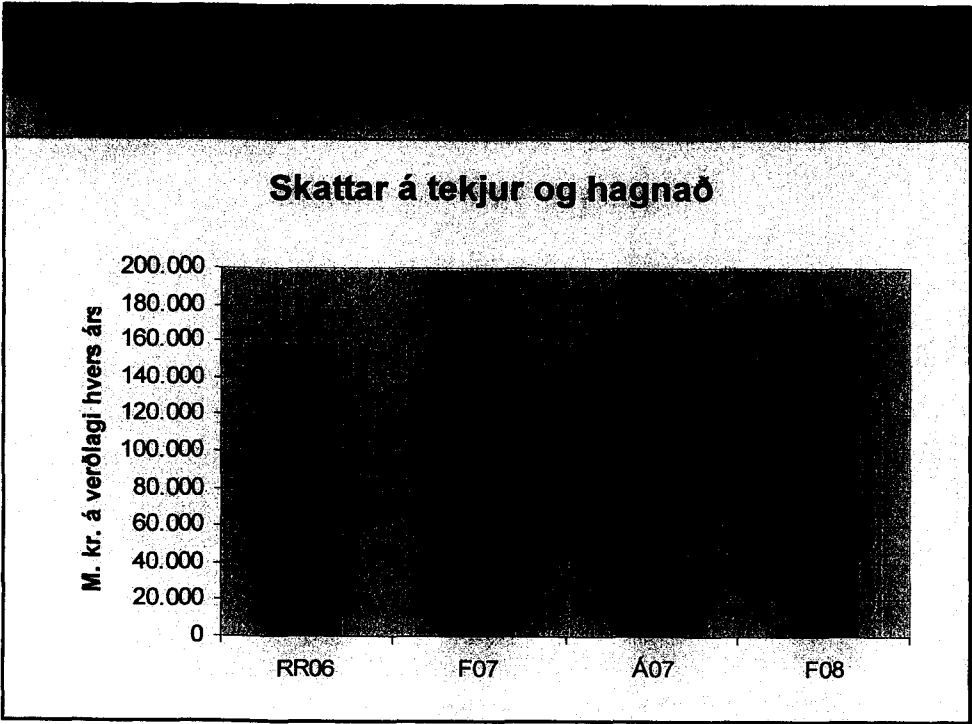
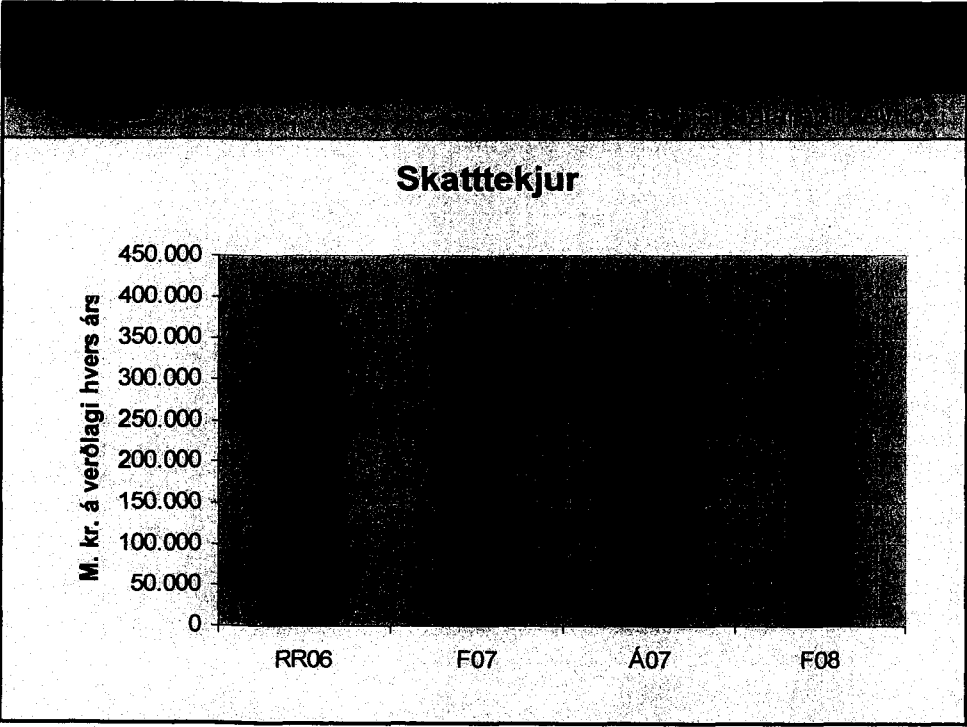
Heildartekjur ríkissjóðs

# Tekjuspá 2008

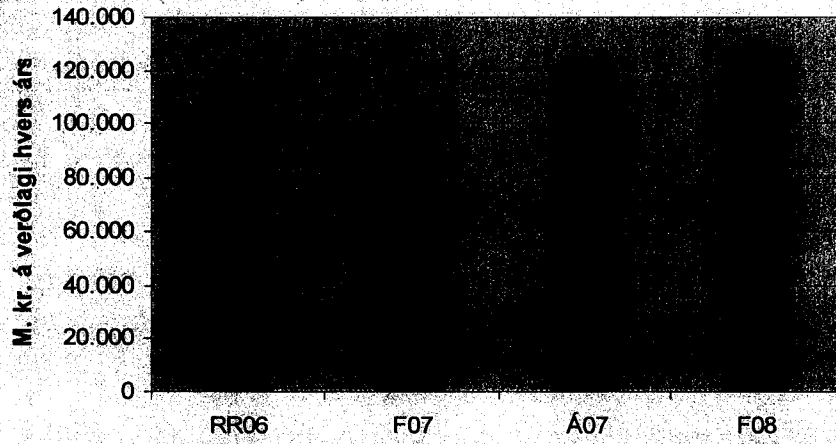
Kynning fyrir efnahags- og skattanefnd

Efnahagsskrifstofa  
6. nóvember 2007

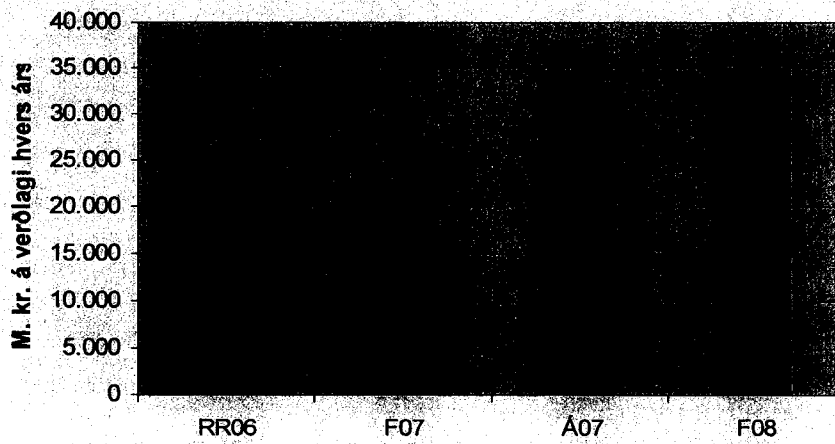


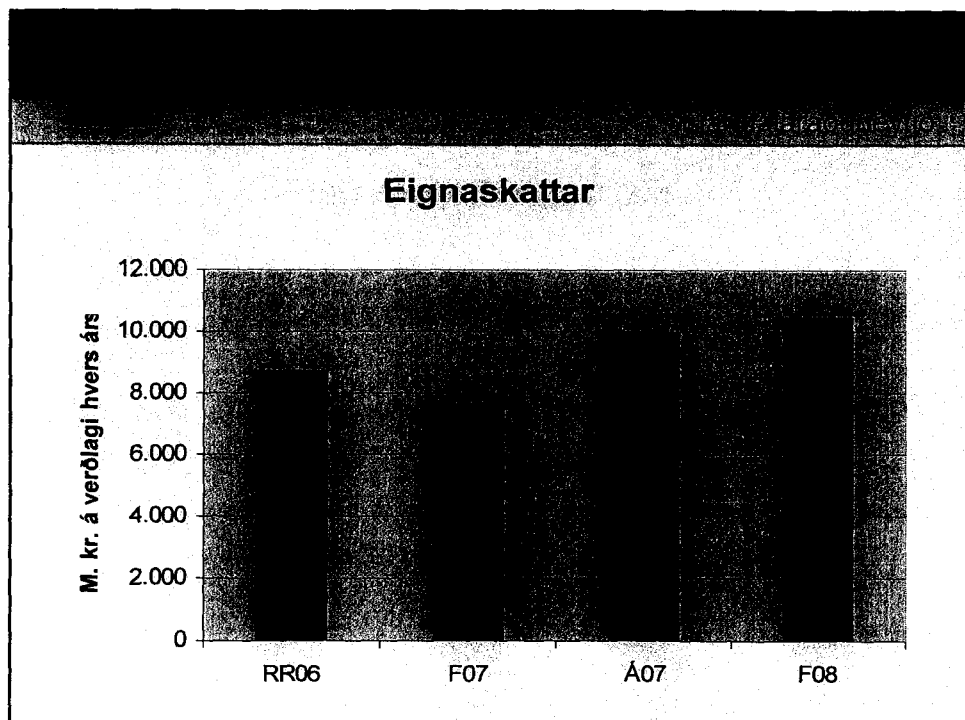
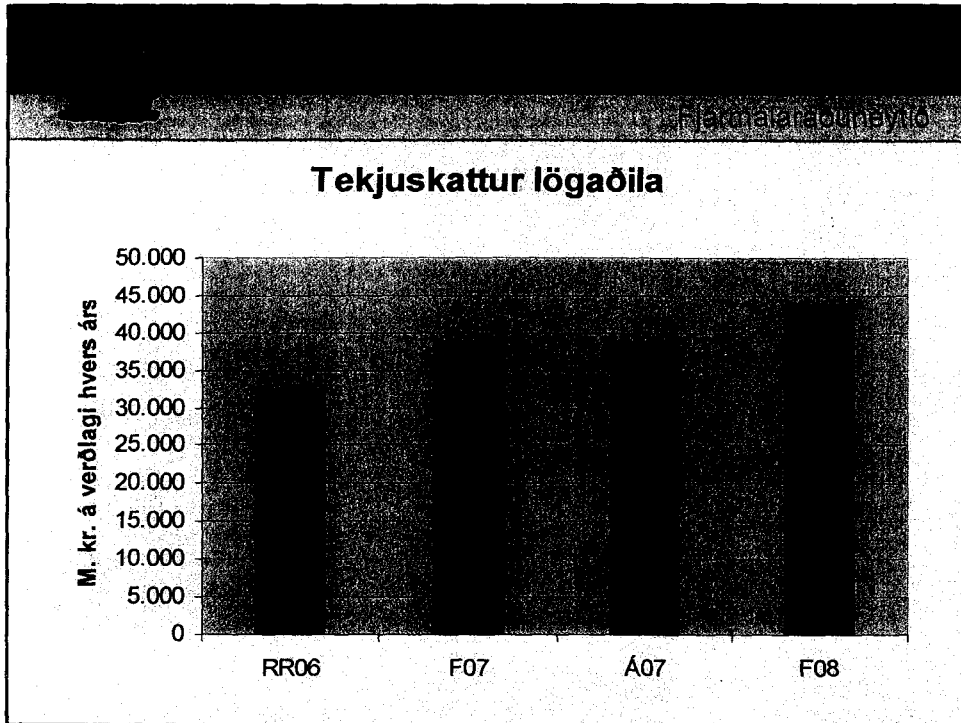


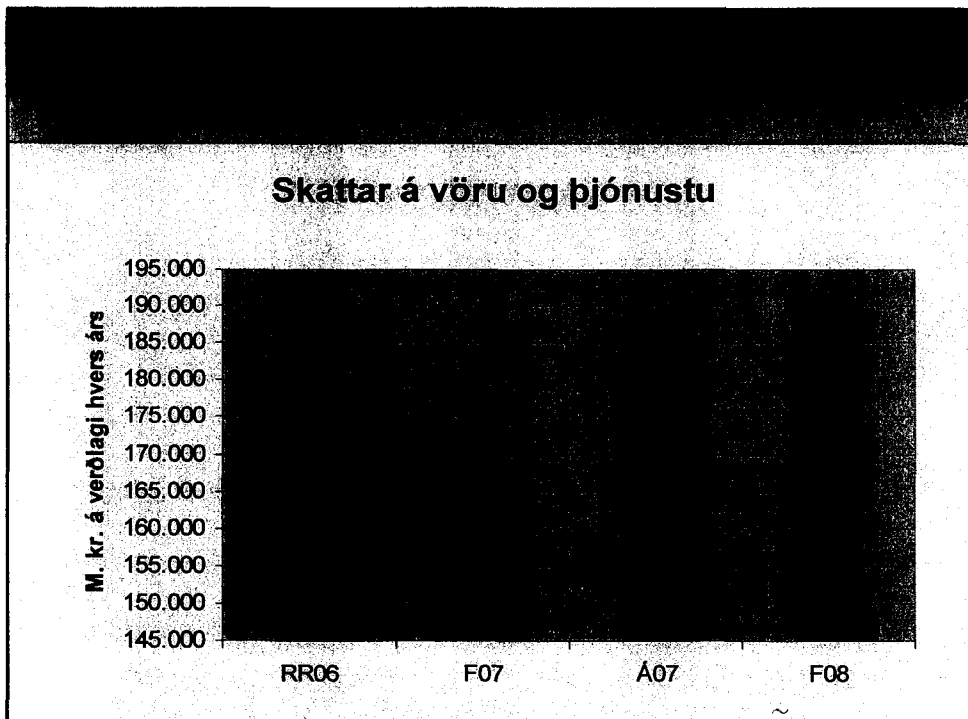
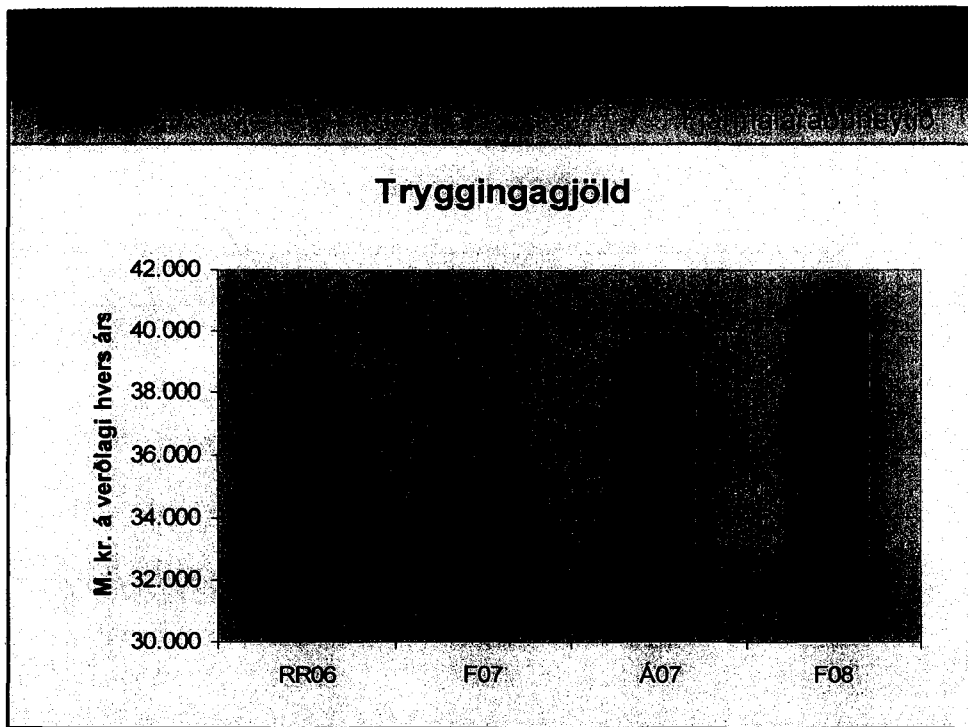
### Tekjuskattur einstaklinga

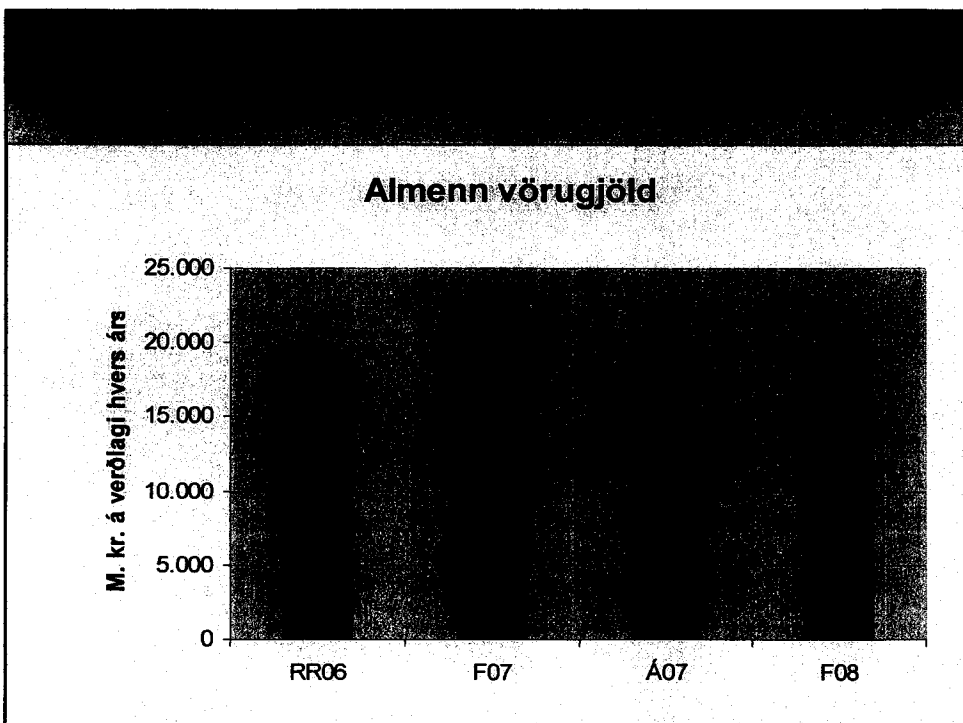
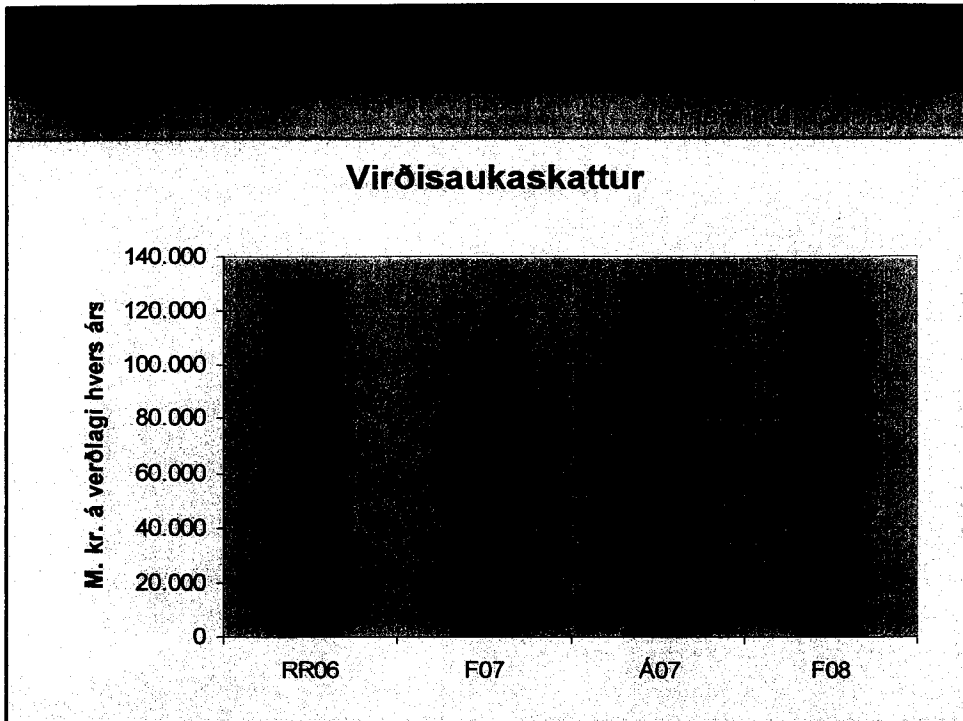


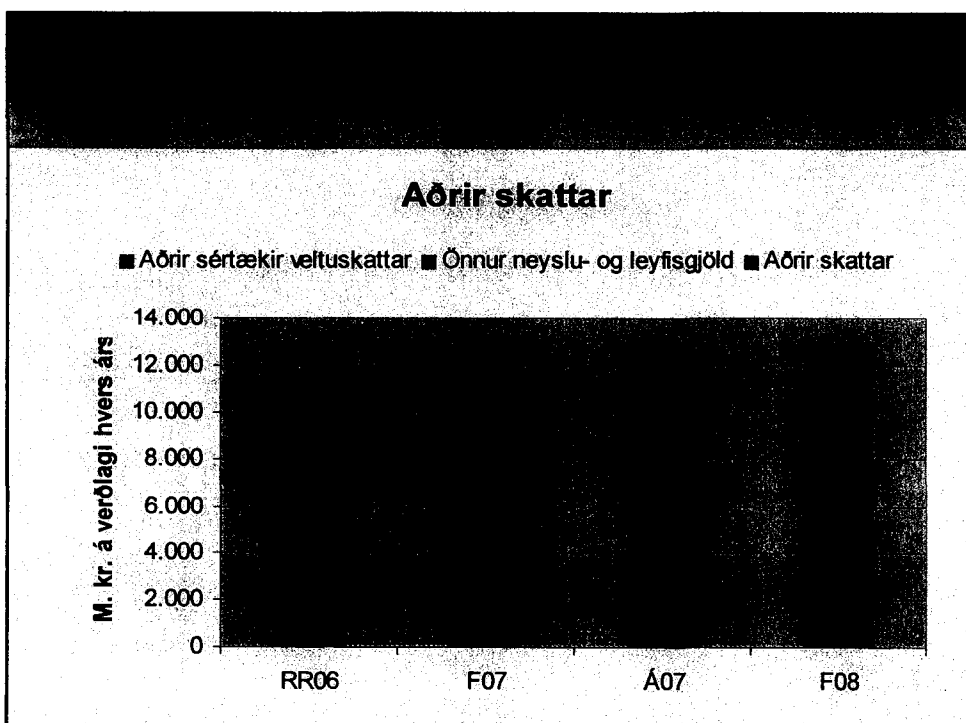
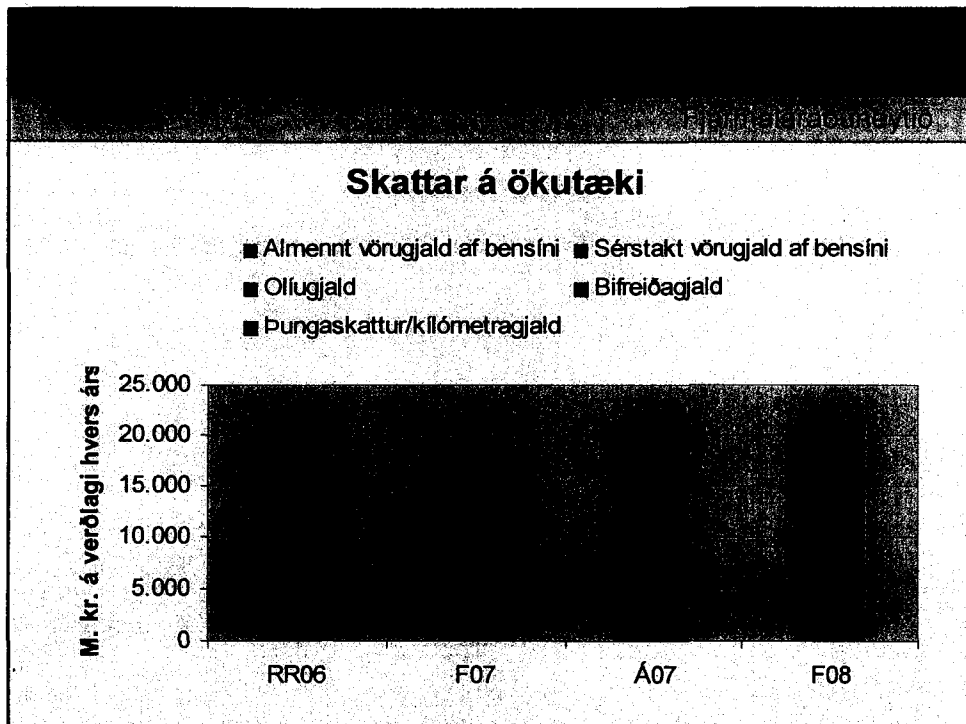
### Fjármagnstekjuskattur



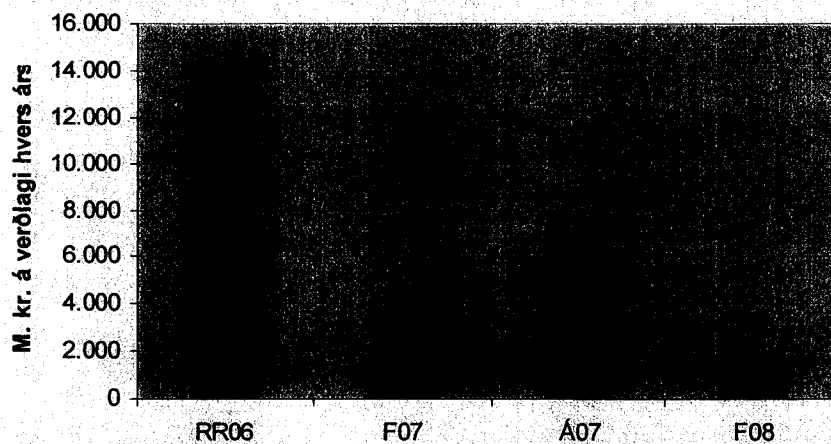




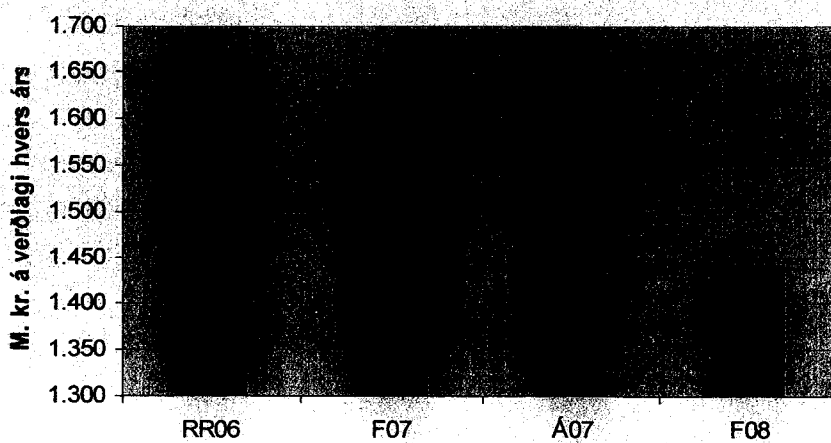




### Sala eigna



### Fjárframlög





Tekjur ríkissjóðs (viðaukatala 3 í fyrra hefti fjárlagafrumvarps 2008)

	M.kr. á verðlagi hvers árs				Nafnbreyting í m.kr.			Nafnbreyting í %			Raunbreyting í %		
	Ríkis- reikn. 2006	Fjárlög 2007	Áætlun 2007	Frum- varp 2008	fjárlög 2007 – áætlun 2007	áætlun 2007 – frumvarp 2008	fjárlög 2007 – frumvarp 2008	fjárlög 2007 – áætlun 2007	áætlun 2007 – frumvarp 2008	fjárlög 2007 – frumvarp 2008	áætlun 2007 – frumvarp 2008	fjárlög 2007 – frumvarp 2008	
<b>I Skatttekjur</b>	<b>377.386</b>	<b>343.223</b>	<b>404.764</b>	<b>422.266</b>	<b>61.541</b>	<b>17.502</b>	<b>79.043</b>	<b>17,9</b>	<b>4,3</b>	<b>23,0</b>	<b>1,0</b>	<b>19,1</b>	
Skattar á tekjur og hagnað	138.652	136.813	164.765	176.469	27.952	11.704	39.656	20,4	7,1	29,0	3,7	24,9	
Einstaklingar	103.935	94.600	121.400	128.500	26.800	7.100	33.900	28,3	5,8	35,8	2,5	31,5	
Tekjuskattur einstaklinga	81.122	75.600	90.500	93.500	14.900	3.000	17.900	19,7	3,3	23,7	0,0	19,7	
Sérstakur tekjuskattur	331	0	0	0	0	0	0	.	.	.	.	.	
Skattur á fjármagnstekjur	22.482	19.000	30.900	35.000	11.900	4.100	16.000	62,6	13,3	84,2	9,7	78,3	
Lógaðilar	32.427	39.000	39.000	44.000	0	5.000	5.000	0,0	12,8	12,8	9,2	9,2	
Ótalið annars staðar	2.290	3.213	4.365	3.969	1.152	-396	756	35,8	-9,1	23,5	-12,0	19,6	
Skattur á fjármagnstekjur ríkissjóðs	1.266	2.125	3.220	2.665	1.095	-555	540	51,5	-17,2	25,4	-19,9	21,4	
Gjald í Framkvæmdasjóð aldraðra	1.024	1.088	1.145	1.304	57	159	216	5,2	13,9	19,8	10,3	16,0	
Tryggingagjöld	37.813	34.851	38.823	41.279	3.972	2.457	6.428	11,4	6,3	18,4	2,9	14,7	
Eignarskattar	8.754	7.675	9.965	10.455	2.290	490	2.780	29,8	4,9	36,2	1,6	31,9	
Skattar á vörur og þjónustu	190.447	162.318	188.602	190.837	26.284	2.236	28.519	16,2	1,2	17,6	-2,0	13,8	
Virðisaukaskattur	132.122	107.000	129.000	133.000	22.000	4.000	26.000	20,6	3,1	24,3	-0,2	20,3	
Almenn vörugjöld	19.015	22.667	19.364	18.618	-3.303	-746	-4.049	-14,6	-3,9	-17,9	-6,9	-20,5	
Vörugjald af ökutækjum	10.083	6.800	9.250	8.150	2.450	-1.100	1.350	36,0	-11,9	19,9	-14,7	16,0	
Almennt vörugjald af bensíni	2.060	1.856	2.080	2.100	224	20	244	12,1	1,0	13,1	-2,3	9,5	
Sérstakt vörugjald af bensíni	6.935	6.590	7.350	7.420	760	70	830	11,5	1,0	12,6	-2,3	9,0	
Ollugjald	5.560	4.510	5.940	6.030	1.430	90	1.520	31,7	1,5	33,7	-1,7	29,4	
Aðrir sértækir veltuskattar	6.795	5.628	7.638	7.272	2.010	-367	1.644	35,7	-4,8	29,2	-7,8	25,1	
Bifreiðagjald	4.110	3.950	4.440	4.610	490	170	660	12,4	3,8	16,7	0,5	13,0	
Þungaskattur/kilómetragjald	1.172	1.054	1.260	1.280	206	20	226	19,5	1,6	21,4	-1,7	17,6	
Önnur neyslu- og leyfisgjöld	2.595	2.263	2.280	2.358	17	78	95	0,7	3,4	4,2	0,1	0,9	
Aðrir skattar	1.721	1.566	2.610	3.226	1.044	615	1.660	66,7	23,6	106,0	19,6	99,4	
<b>II Aðrar rekstrartekjur</b>	<b>28.705</b>	<b>30.474</b>	<b>34.996</b>	<b>36.259</b>	<b>4.522</b>	<b>1.263</b>	<b>5.785</b>	<b>14,8</b>	<b>3,6</b>	<b>19,0</b>	<b>0,3</b>	<b>15,2</b>	
Arðgreiðslur	1.236	1.238	1.282	1.557	44	275	319	3,6	21,5	25,8	17,6	21,7	
Vaxtatekjur og aðrar eignatekjur	18.358	20.450	25.045	25.382	4.595	337	4.932	22,5	1,3	24,1	-1,9	20,2	
Neyslu- og leyfisgjöld	7.625	7.685	7.553	8.220	-132	668	535	-1,7	8,8	7,0	5,4	3,5	
Annað	1.486	1.102	1.117	1.101	15	-16	-2	1,3	-1,5	-0,1	-4,6	-3,3	
<b>III Sala eigna</b>	<b>14.210</b>	<b>1.100</b>	<b>6.838</b>	<b>1.200</b>	<b>5.738</b>	<b>-5.638</b>	<b>100</b>	<b>521,7</b>	<b>-82,5</b>	<b>9,1</b>	<b>-83,0</b>	<b>5,6</b>	
<b>IV Fjármagnstilfærslur</b>	<b>0</b>	<b>-</b>	<b>0</b>	<b>0</b>	<b>0</b>	<b>0</b>	<b>0</b>	<b>.</b>	<b>.</b>	<b>.</b>	<b>.</b>	<b>.</b>	
<b>V Fjárframlög</b>	<b>1.662</b>	<b>1.617</b>	<b>1.672</b>	<b>1.443</b>	<b>55</b>	<b>-229</b>	<b>-174</b>	<b>3,4</b>	<b>-13,7</b>	<b>-10,7</b>	<b>-16,4</b>	<b>-13,6</b>	
<b>Heildartekjur ríkissjóðs</b>	<b>421.963</b>	<b>376.414</b>	<b>448.270</b>	<b>461.168</b>	<b>71.856</b>	<b>12.898</b>	<b>84.754</b>	<b>19,1</b>	<b>2,9</b>	<b>22,5</b>	<b>-0,4</b>	<b>18,6</b>	
<b>Sjóðshreyfing</b>	<b>396.526</b>	<b>365.867</b>	<b>426.640</b>	<b>441.848</b>	<b>60.773</b>	<b>15.208</b>	<b>75.981</b>	<b>16,6</b>	<b>3,6</b>	<b>20,8</b>	<b>0,3</b>	<b>16,9</b>	